

ACCOMMODATION BOOKING

For hotel bookings sent an e-mail to terezia.nemcova@fs.cvut.cz as soon as possible - recommended date is **31 July 2012.**

Required Information

Name and First name:

Date of arrival:

Date of departure:

Number of nights:

Name of Hotel (2 choices):

Type of room (single, double, twin, etc.):

Number of rooms:

Form of payment (by card "on-line", by card "mail order", by bank transfer, on-site payment):

Special requirements or notes (smoker, disabled, etc.):

LIST OF HOTELS

- The price of the accommodation includes bed, breakfast, city charges and VAT.
- **The prices are valid if your order is sent to the Conference Secretariat, only (not to the hotel).**
- Hotel assignment will be made on the first-come, first-serve basis; therefore it is advisable to make reservation of accommodation as soon as possible.
- Hotel voucher will be mailed to you by e-mail by 31 August 2012.
- If you do not like any hotel arranged by Conference Secretariat, you can book hotel by yourself. A lot of "Special" and "Last minute" offers of the accommodation you can find at internet.

Hotel / hostel - category	Single Room	Double or Twin	The way to the Conference venue	Address
	CZK	CZK		
1. Ramada Prague City Centre**** ☺	2.750	2.850	metro A	Václavské nám. 41, Praha 1 – Nové Město
2. Rokoko**** ☺	2.500	2.700	metro A	Václavské nám. 38, Praha 1 – Nové Město
3. Diplomat - standard ****	2.450	2.450	285 m on foot	Evropská 15, Praha 6 – Dejvice
4. Silenzio ****	1.850	2.050	500 m on foot steps & up to the hill	Na Karlovce 1b,, Praha 6 – Dejvice
5. Denisa **** (our opinion ***)	1.700	1.900	995 m on foot	Národní obrany 33, Praha 6 – Bubeneč
6. Novoměstský hotel ***	1.600	1.850	metro A	Řeznická 4, Praha 1 – Nové Město
7. DAP *** (our opinion ***) ¹⁾	1.100	1.800	680 m on foot	Vítězné náměstí 684/4, Praha 6 – Dejvice
8. Masarykova kolej ** (hostel) ¹⁾	850	1.300	venue	Thákurova 1, Praha 6 – Dejvice

¹⁾ Very limited number of rooms

☺ Stay for 3 and more nights – 10% discount

Cancellation Fees and Refunds

- The Conference Secretariat must be notified in writing about any change in booking or cancellation
- In case of cancellation hotel booking after 31 August 2012 one night deposit will be charged.
- Refunds will be settled after the Conference – to your payment card or to your account (information needed to refund: name of your bank, address of your bank, account name, account number, IBAN, SWIFT/BIC, eventually your details of refund).

Useful links:

Airport Praha Ruzyně

www.prg.aero/en/

Czech Airlines

www.csa.cz/en

Prague Public Transport

www.dpp.cz/en

Taxi:

www.aaataxi.cz

Masarykova kolej **, (Masaryk college - hostel), Thákurova 1, Praha 6 – Dejvice
GPS: 50°6'3.686"N, 14°23'13.383"E

Location: 25 min from the airport – 20 min by bus + 5 min on foot, 15 min to the Prague centre
The hostel is situated in a residential area within the Prague 6 district and in the campus of CTU

Venue of the Conference

Masarykova kolej is CTU in Prague student's college, from parts used like hotel. The total capacity is 718 beds from single to triple rooms, 4 suites (hotel part has 64 beds). Buffet-style breakfast.

ROOM FACILITIES

TV/SAT, bathroom with shower, toilet, direct dial phone, some rooms has a small kitchen, internet access (free of charge)

PROPERTY FACILITIES

Wi-Fi in the lobby (free of charge), restaurant, pub, elevator, handicapped accessible, currency exchange, credit cards accepted, electronically guarded parking lot (extra charge)



DAP *** *Dům armády Praha (House of the Army, Prague)*, Vítězné nám. 684/4, 160 00 Praha 6 – Dejvice
GPS: 50°5'58.558"N, 14°23'41.939"E

Location: ca 25 min from the airport – 20 min by bus + 5 min on foot (400 m), 10 min to the Prague centre

Way to the Conference venue: ca 7 min on foot (680 m)

Hotel is situated just a few minutes from the Prague Castle. It is located in the centre of one of the most important Prague's Dejvice district. Hotel is lately reconstructed, up-to-date and comfortable, offers 51 non-smoking rooms. Buffet-style breakfast.

ROOM FACILITIES

TV/SAT, direct dial phone, air-condition, internet, toilet, bathroom with shower or tub, hair dryer

PROPERTY FACILITIES

24-hours service reception, hotel safe, currency exchange, city tours/excursions, elevator, credit cards accepted, parking in front of the hotel, pets allowed (extra charge), restaurant Evropa – air condition, breakfast restaurant – 2nd floor, sauna, fitness, congress hall



Novoměstský hotel ***, Řeznická 4, Praha 1 – Nové Město
GPS: 50°4'40.995"N, 14°25'20.173"E

Location: quiet street in the downtown area (6 min from Wenceslas Square)

Way to the Conference venue: ca 20 - 30 min
ca 6 min on foot to the metro station "Můstek (565 m)", then 10 min by metro line A, to "Dejvická" station and ca 5 min walking (435 m)

68 beds – double rooms and suites, buffet-style breakfast

ROOM FACILITIES

TV/SAT, direct dial phone, fridge, Wi-Fi (free of charge), toilet, shower

PROPERTY FACILITIES

24-hours service reception, Wi-Fi in the lobby (free of charge), opening window, city tours/excursions, elevator, credit cards accepted, currency exchange



Denisa ** (our opinion – 3 stars+)**, Národní obrany 33, 160 00 Praha 6 – Bubeneč
GPS: 50°6'4.178"N, 14°23'51.584"E

Location: 30 min from the airport – 20 min by bus + 10 min on foot (715 m)
15 minutes to the Prague centre

Way to the Conference venue: ca 10 min on foot (995 m)

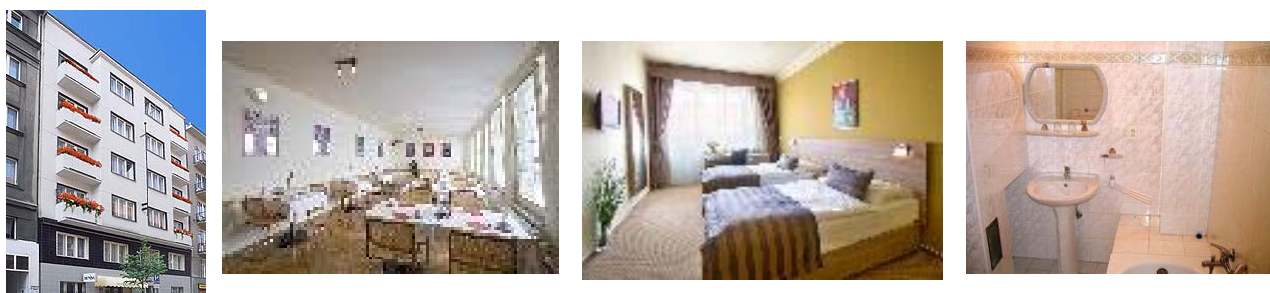
The hotel was renovated in 2008 and offers 43 rooms all comfortably equipped with modern furniture. Non smoking rooms are available. Buffet-style breakfast.

ROOM FACILITIES

TV/SAT, direct dial phone, fridge, Wi-Fi (free of charge), room safe (free of charge), coffee/tea making facilities, toilet, bathroom with shower or tub, toiletries, sewing kit, hair dryer

PROPERTY FACILITIES

24-hours service reception, PC/internet & Wi-Fi in the lobby (free of charge), opening window, currency exchange, city tours/excursions, handicapped accessible, elevator, cleaning service, laundry, clothes-press available, credit cards accepted, parking in front of the hotel (extra charge), pets allowed (free of charge)



Silenzio hotel ****, Na Karlovce 1b, Praha 6 – Dejvice
GPS: 50°6'7.102"N, 14°22'51.996"E

Location: 35 minutes from the airport – 20 min bus, 15 min on foot, 25 minutes to the Prague centre
The hotel is situated on southern slopes of the quiet and legendary Hanspaulka district - famously characterized by its modern 20th century functionalist architecture.

Way to the Conference venue: ca 10 min on foot down the hill – some stairs on the way!! (500 m)

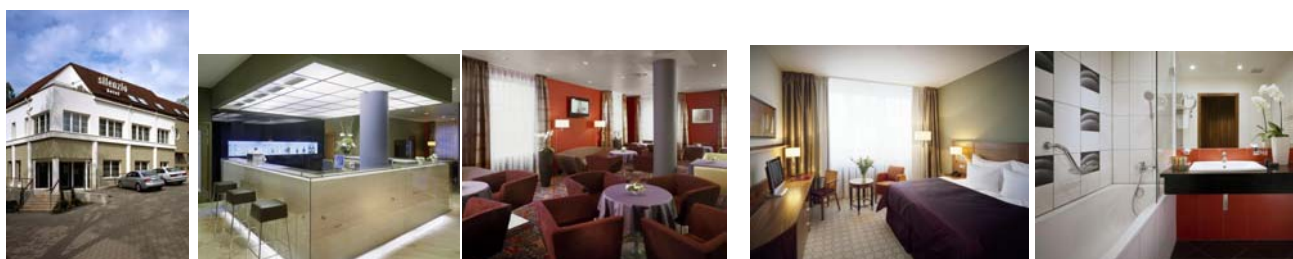
The hotel offers high-standard accommodation and services. All the rooms and apartments have convenient modern furniture and fittings. Buffet-style breakfast.

ROOM FACILITIES

TV/SAT, pay TV, direct dial telephone, internet, Wi-Fi, mini-bar, safe, air condition, room for disabled people, bathroom with tub or shower, hair dryer

PROPERTY FACILITIES

Wi-Fi, lobby bar, credit card accepted, currency exchange, non-smoking rooms available, handicapped accessible, terrace, conference room, parking lot



Diplomat ****, Evropská 15, 160 41 Praha 6 – Dejvice
GPS: 50°5'59.497"N, 14°23'23.303"E

Location: 20 minutes from the airport (by public transport), 10 minutes to the Prague centre by metro

Way to the Conference venue: ca 5 minutes on foot (285 m)

The hotel, renowned for its excellent conference and business facilities, was opened in 1990 and newly renovated in 2007. The hotel is surrounded mainly by diplomatic residences. There are 398 standard or superior rooms and suites. Buffet-style breakfast.

ROOM FACILITIES

air condition, TV/SAT, pay TV, direct dial phone, internet access (extra charge), safe, mini bar, bathroom, toilet, hair dryer

PROPERTY FACILITIES

PC/internet and Wi-Fi (extra charge), 24-hours service reception, concierge, fax and secretarial service, post service, restaurant, lobby-bar, non-smoking rooms available, handicapped accessible, fitness centre, sauna, whirlpool, massages, steam bath, flower shop, hairdresser, manicure, souvenir shop, limousine services, conference rooms, hotel garage (extra charge)



Rokoko ****, Václavské náměstí 38, Praha 1 – Nové Město
GPS: 50°4'53.695"N, 14°25'35.292"E

Location: directly in the historical and vibrant city centre of Prague, directly at the Wenceslas Square

Way to the Conference venue: ca 20 min (2 min on foot to the metro station "Můstek (30 m)", then 10 min by metro line A, to "Dejvická" station, and another 5 min walking (435 m)

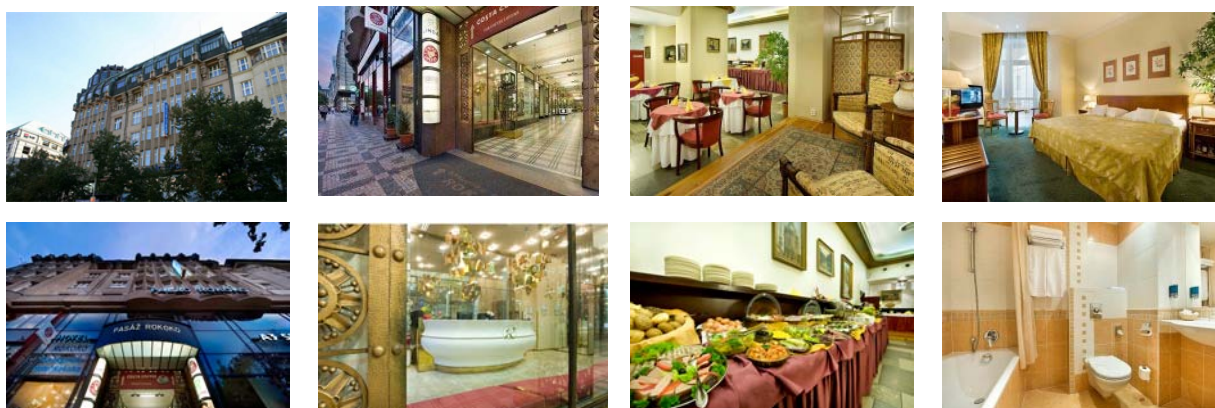
Hotel Rokoko has 48 rooms with a comfortable atmosphere - beautifully designed and decorated in elegant golden tones. There is one room for disable. Buffet breakfast served in an elegant room.

ROOM FACILITIES

internet free WI-FI, TV/SAT, direct dial phone, mini-bar, room safe, under floor heating in bathroom with tub or shower, hair dryer, toilet, ironing board and iron on request, air condition – only some of the rooms

PROPERTY FACILITIES

24-hours service reception & room service, currency exchange, concierge, credit cards accepted, laundry, garage parking nearby for an extra charge, own limousine service – taxi



Ramada Prague City Centre ****, Václavské náměstí 41, Praha 1 – Nové Město
GPS: 50°4'53.272"N, 14°25'40.819"E

Location: directly in the historical and vibrant city centre of Prague, directly at the Wenceslas Square

Way to the Conference venue: ca 20 min (5 min on foot to the metro station "Můstek (100 m)", then 10 min by metro line A, to "Dejvická" station, and another 5 min walking (435 m)

The hotel offers comfortable accommodation in 84 air-conditioned nicely furnished rooms and 14 apartments. There is also one room for disabled guests. Buffet breakfast. Non-smoking rooms are situated on the 2nd, 4th and 6th floor (50% of total hotel capacity). Some rooms offer a magnificent view of Wenceslas Square, other rooms of a closed courtyard. All rooms ensure a tranquil sleep and stay.

ROOM FACILITIES

internet free WI-FI, TV/SAT, direct dial phone, mini-bar, room safe, medical mattress, anti-allergy pillows, black-out curtains, under floor heating in bathroom with tub or shower, hair dryer, toilet, ironing board and iron on request, air condition, extra bed on request

PROPERTY FACILITIES

24-hours service reception & room service, currency exchange, concierge, restaurant, bar, business centre, credit cards accepted, laundry, garage parking for an extra charge, own limousine service – taxi

